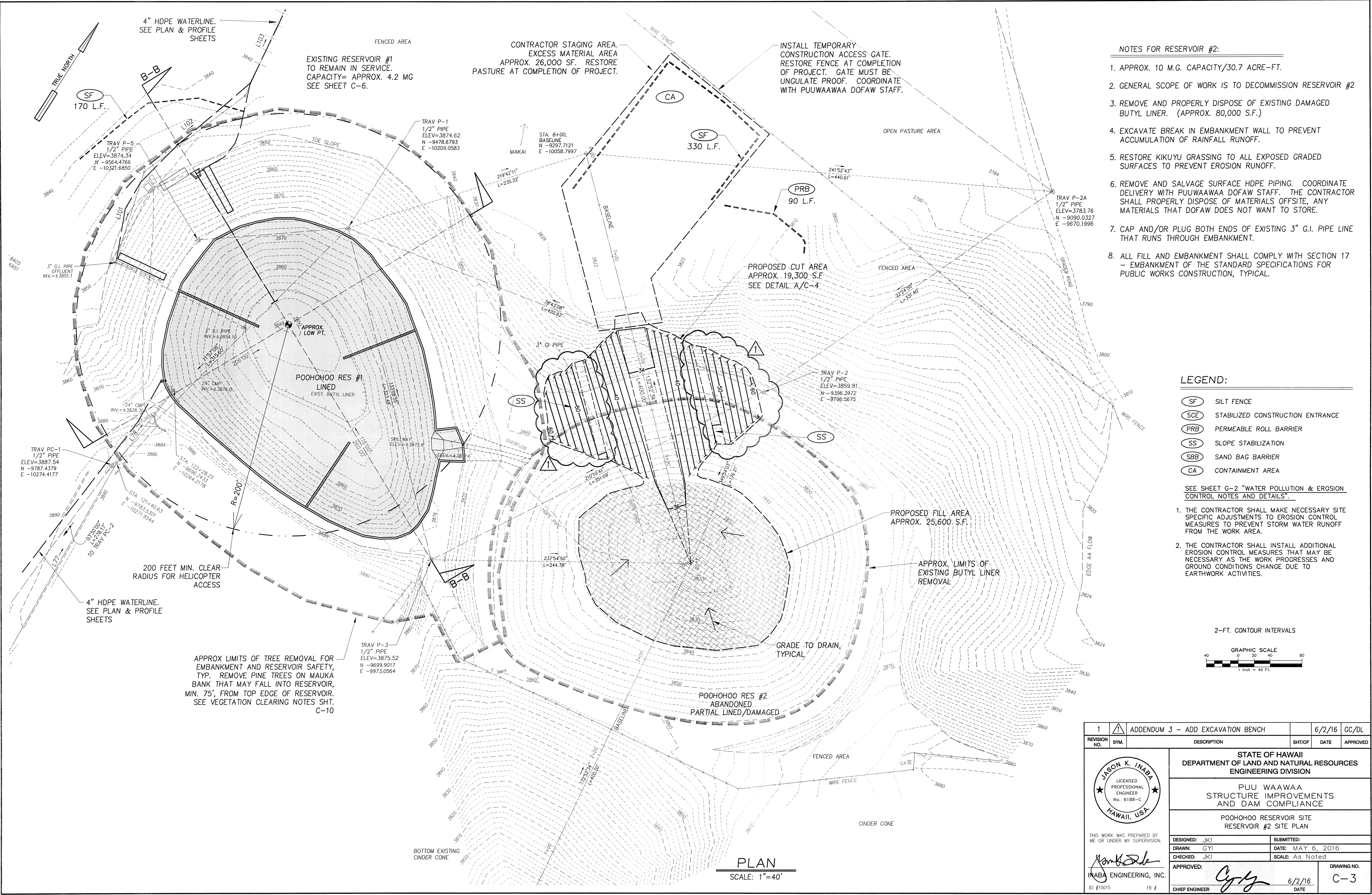


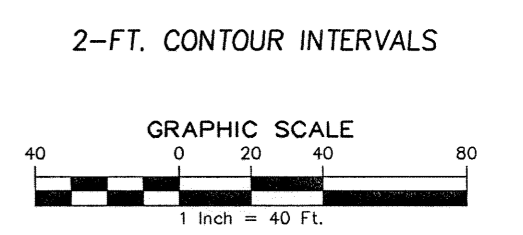
\\DLR\15015-Puuwaawaa\01-Drawings\10-Bose-Pooohoo\1r1 1-4



- NOTES FOR RESERVOIR #2:**
- APPROX. 10 M.G. CAPACITY/30.7 ACRE-FT.
 - GENERAL SCOPE OF WORK IS TO DECOMMISSION RESERVOIR #2
 - REMOVE AND PROPERLY DISPOSE OF EXISTING DAMAGED BUTYL LINER. (APPROX. 80,000 S.F.)
 - EXCAVATE BREAK IN EMBANKMENT WALL TO PREVENT ACCUMULATION OF RAINFALL RUNOFF.
 - RESTORE KIKUYU GRASSING TO ALL EXPOSED GRADED SURFACES TO PREVENT EROSION RUNOFF.
 - REMOVE AND SALVAGE SURFACE HDPE PIPING. COORDINATE DELIVERY WITH PUUWAAWAA DOFAW STAFF. THE CONTRACTOR SHALL PROPERLY DISPOSE OF MATERIALS OFFSITE, ANY MATERIALS THAT DOFAW DOES NOT WANT TO STORE.
 - CAP AND/OR PLUG BOTH ENDS OF EXISTING 3" G.I. PIPE LINE THAT RUNS THROUGH EMBANKMENT.
 - ALL FILL AND EMBANKMENT SHALL COMPLY WITH SECTION 17 - EMBANKMENT OF THE STANDARD SPECIFICATIONS FOR PUBLIC WORKS CONSTRUCTION, TYPICAL.

- LEGEND:**
- (SF) SILT FENCE
 - (SCE) STABILIZED CONSTRUCTION ENTRANCE
 - (PRB) PERMEABLE ROLL BARRIER
 - (SS) SLOPE STABILIZATION
 - (SBB) SAND BAG BARRIER
 - (CA) CONTAINMENT AREA

- SEE SHEET G-2 "WATER POLLUTION & EROSION CONTROL NOTES AND DETAILS".
- THE CONTRACTOR SHALL MAKE NECESSARY SITE SPECIFIC ADJUSTMENTS TO EROSION CONTROL MEASURES TO PREVENT STORM WATER RUNOFF FROM THE WORK AREA.
 - THE CONTRACTOR SHALL INSTALL ADDITIONAL EROSION CONTROL MEASURES THAT MAY BE NECESSARY AS THE WORK PROGRESSES AND GROUND CONDITIONS CHANGE DUE TO EARTHWORK ACTIVITIES.



1	ADDENDUM 3 - ADD EXCAVATION BENCH	6/2/16	GC/DL		
REVISION NO.	SYM.	DESCRIPTION	SHT/OF	DATE	APPROVED
STATE OF HAWAII DEPARTMENT OF LAND AND NATURAL RESOURCES ENGINEERING DIVISION					
PUU WAAWAA STRUCTURE IMPROVEMENTS AND DAM COMPLIANCE					
POOHOOO RESERVOIR SITE RESERVOIR #2 SITE PLAN					
DESIGNED: JK1 DRAWN: GYI CHECKED: JK1			SUBMITTED: DATE: MAY 6, 2016 SCALE: As Noted		
APPROVED: <i>[Signature]</i> INABA ENGINEERING, INC. CHIEF ENGINEER				DATE: 6/2/16 DRAWING NO.: C-3	

PLAN
SCALE: 1"=40'